

IOWA DEPARTMENT OF TRANSPORTATION

AGENDA ITEMS/COMMISSION ORDERS

Tuesday, November 9, 2010
Materials Conference Room
Ames DOT Complex

ITEM NUMBER	TITLE	SUBMITTED BY	PAGE
D-2011-18 1:30 p.m.	*Approve Minutes of the October 12, 2010, Commission Meeting in Dubuque Commission Comments Staff Comments	Connie Page	1
PPM-2011-19 1:35 p.m.	*Iowa Grade Crossing Surface Repair Program Projects (revised 2011 and proposed 2012)	Tamara Nicholson	2
PPM-2011-20 1:40 p.m.	*Federal-Aid Highway/Rail Crossing Safety Program Projects (2012)	Tamara Nicholson	7
PPM-2011-21 1:45 p.m.	*Revitalize Iowa's Sound Economy (RISE) Application – Hiawatha (Delegation)	Craig Markley	9
PPM-2011-22 1:50 p.m.	*Revitalize Iowa's Sound Economy (RISE) Application – Ankeny (Delegation)	Craig Markley	12
PPM-2011-23 1:55 p.m.	*Revitalize Iowa's Sound Economy (RISE) Default and Proposed Settlement – Webster County	Craig Markley	15
2:00 p.m.	Adjourn		

*Action Item

On Tuesday, November 9, the Commission and staff will meet informally at 9:30 a.m. in the Materials conference room at the DOT complex in Ames. Transportation-related matters will be discussed but no action will be taken.

DEPARTMENT OF TRANSPORTATION
COMMISSION ORDER

Division/Bureau/Office Director's Office Order No. D-2011-18
Submitted by Connie Page Phone No. 515-239-1242 Meeting Date November 9, 2010
Title Approve Minutes of the October 12, 2010, Commission Meeting in Dubuque

DISCUSSION/BACKGROUND:

PROPOSAL/ACTION RECOMMENDATION:

It is recommended the Commission approve the minutes of the October 12, 2010, Commission meeting in Dubuque.

COMMISSION ACTION:

Moved by Sawtelle Seconded by Reasner

	Aye	Vote Nay	Pass
Blouin	<u>X</u>	_____	_____
Cleveland	<u>Absent</u>	_____	_____
Durham	<u>X</u>	_____	_____
Miles	<u>X</u>	_____	_____
Reasner	<u>X</u>	_____	_____
Sawtelle	<u>X</u>	_____	_____
Wiley	<u>X</u>	_____	_____

Division Director Legal State Director

Commission Comments

1. U.S. 30 Tama/Toledo Bypass

Commissioner Reasner said she traveled U.S. 30 from Cedar Rapids today and got to drive on some of the new bypass near Tama. Even though it is not completed, it is exciting to see all that work. It is great we still have good weather to do more four laning on U.S. 30. Director Nancy Richardson said we are hoping that we can get another month's worth of work done prior to winter weather.

DEPARTMENT OF TRANSPORTATION
COMMISSION ORDER

Planning, Programming and Modal Division

Division/Bureau/Office Office of Rail Transportation Order No. PPM-2011-19

Submitted by Tamara Nicholson Phone No. 515-239-1052 Meeting Date November 9, 2010

Title Iowa Grade Crossing Surface Repair Program Projects (revised 2011 and proposed 2012)

DISCUSSION/BACKGROUND:

Staff will present the revised 2011 and 2012 Iowa Grade Crossing Surface Repair Program projects and the revised 2011 and 2012 surface repair projects funded under the Federal-Aid Highway/Rail Crossing Safety Program. A listing of the proposed projects is attached.

PROPOSAL/ACTION RECOMMENDATION:

It is recommended the Commission approve the revised 2011 and proposed 2012 Iowa Grade Crossing Surface Repair Program projects.

COMMISSION ACTION:

Moved by _____ Seconded by _____

	Aye	Vote Nay	Pass
Blouin	_____	_____	_____
Cleveland	_____	_____	_____
Durham	_____	_____	_____
Miles	_____	_____	_____
Reasner	_____	_____	_____
Sawtelle	_____	_____	_____
Wiley	_____	_____	_____

Division Legal State Director
Director

PPM-2011-19

Tamara Nicholson, Office of Rail Transportation, said the Iowa Grade Crossing Surface Repair Program provides funding to railroads and highway jurisdictions to repair rail/highway grade crossings. The funding is available to railroads, cities that own public crossings, and highway authorities through an annual application program. Applications must be submitted jointly by railroads and highway authorities to be considered for funding.

Ms. Nicholson said she presented a recommendation to the Commission at the October workshop for 2011 and 2012 surface repair projects. The recommendation today is to approve funding as follows:

- Revised 2011 Iowa Grade Crossing Surface Repair Program – 29 projects totaling \$895,654.
- 2012 Iowa Grade Crossing Surface Repair Program – 15 projects totaling \$869,883.
- 2011 Federal-Aid Highway/Rail Crossing Safety Program for surface projects – 13 projects totaling \$976,798.
- 2012 Federal-Aid Highway/Rail Crossing Safety Program for surface projects – 15 projects totaling \$998,745.

Commissioner Blouin moved, Commissioner Durham seconded the Commission approve the revised 2011 and proposed 2012 Iowa Grade Crossing Surface Repair Program projects. Commissioner Cleaveland absent; remaining Commissioners voted aye.

2011 Iowa Grade Crossing Surface Repair Program

State Surface
Repair Fund (60
percent)

County	Federal ID	Railroad	Highway Jurisdiction	Road Location	State Surface Repair Fund (60 percent)
Muscatine	607204S	DM&E	Muscatine	Cedar Street	\$ 37,320
Muscatine	607206F	DM&E	Muscatine	Iowa Street	43,800
Muscatine	607213R	DM&E	Muscatine	Musser Street	69,502
Muscatine	607212J	DM&E	Muscatine	Day Street	50,700
Muscatine	375953B	DM&E	Muscatine	Houser Street	35,640
Muscatine	606729G	DM&E	Muscatine	59th Avenue	27,583
Muscatine	606758S	DM&E	Muscatine	Dewey Avenue	25,523
Muscatine	606759Y	DM&E	Muscatine	Nebraska Street	25,523
Muscatine	606756D	DM&E	Muscatine	Baker Street	36,720
Muscatine	606757K	DM&E	Muscatine	Benham Street	36,720
Muscatine	606755W	DM&E	Muscatine	Earl Street	27,103
Benton	607671E	IANR	Benton County	53rd Street	24,000
Cerro Gordo	606100G	IANR	Cerro Gordo County	Thrush Avenue	27,000
Cerro Gordo	606096U	IANR	Cerro Gordo County	Vine Avenue	24,000
Cerro Gordo	606103C	IANR	Cerro Gordo County	330th Street	27,000
Floyd	607710T	IANR	Floyd County	Hickory Avenue	33,000
Floyd	607719E	IANR	Floyd County	9th Street Road	27,000
Butler	607687B	IANR	Butler County	South Street	24,000
Butler	607425U	IANR	Butler County	Packard Avenue (County Road T-47)	33,000
Butler	607399G	IANR	Butler County	220th Street	24,000
Floyd	607721F	IANR	Rockford	1st Street South	24,000
Floyd	607722M	IANR	Rockford	2nd Street Southwest	24,000
Floyd	607723U	IANR	Rockford	3rd Street Southwest	24,000
Floyd	607720Y	IANR	Rockford	2nd Street Southeast	24,000
Black Hawk	607627S	IANR	Black Hawk County	Winslow Road (County Road C-55)	24,000
Cerro Gordo	858791M	IATR	Mason City	South Coolidge	29,130
Cerro Gordo	874103N	IATR	Mason City	South Wilson Avenue	29,130

Above projects were approved by Transportation Commission Nov. 10, 2009.

Cerro Gordo	874974W	IATR	Mason City	South Georgia Avenue	29,130
Cerro Gordo	874097M	IATR	Mason City	South Harding Avenue	29,130
Above projects pending Transportation Commission approval.					
TOTAL					\$ 895,654

2012 Iowa Grade Crossing Surface Repair Program

County	Federal ID	Railroad	Highway Jurisdiction	Road Location	State Surface Repair Fund (60 percent)
Johnson	840173H	CIC	Coralville	12th Avenue	\$ 43,894
Johnson	909184T	CIC	Coralville	7th Avenue	41,163
Palo Alto	875855R	UP	Palo Alto	430th Street	28,800
Cerro Gordo	873309K	IATR	Cerro Gordo County	State Avenue	59,100
Benton	376750A	CIC	Walford	3rd Street	43,925
Carroll	377911W	BNSF	Carroll County	4th Street	75,000
Jasper	607982F	IAIS	Jasper County	39th Avenue East	96,000
Muscatine	606840L	IAIS	Muscatine County	County Road X-46	49,200
Muscatine	606832U	IAIS	Muscatine County	North Isett Avenue	90,000
Scott	606792Y	IAIS	Scott County	110th Avenue	49,200
Scott	606804R	IAIS	Walcott	Henry Street	85,200
Poweshiek	193121E	UP	Searsboro	4th Street	34,800
O'Brien	385778P	DM&E	Sheldon	8th Avenue South	41,149
Johnson	607519V	CIC	Hills	Main Street	91,098
Johnson	840231B	CIC	Swisher	Division Street	41,354
TOTAL					\$ 869,883

2011 Federal-Aid Highway/Rail Crossing Safety Program

Surface Repair Projects

County	Federal ID	Railroad	Highway Jurisdiction	Road Location	Federal Safety Funds (60 percent)
Washington	607322U	DM&E	Washington	North 4th Avenue	\$ 77,601
Muscatine	607211C	DM&E	Muscatine	Oregon Street	157,800
Woodbury	064029A	BNSF	Sioux City	11th Street	164,654
Woodbury	382039G	BNSF	Sioux City	Jackson Street	75,600
Clay	385717Y	DM&E	Spencer	4th Avenue West	95,038
Clay	385717Y	GPGC	Spencer	4th Avenue West	47,519
Clay	385708A	DM&E	Spencer	10th Avenue East	96,747
Clay	385719M	DM&E	Spencer	11th Avenue West	53,621
Scott	865635T	DM&E	Riverdale	South Bellingham	44,959
Cerro Gordo	385471D	NICO	Cerro Gordo County	Thrush (County Road S-56)	37,692
O'Brien	385775U	DM&E	Sheldon	Washington Avenue	43,476
Linn	307834H	CC	Hiawatha	North Center Point Road	39,360
Buchanan	307087V	CC	Jesup	5th Street	42,731
TOTAL					\$ 976,798

The above projects were approved by the Transportation Commission on Nov. 10, 2009.

2012 Federal-Aid Highway/Rail Crossing Safety Program

Surface Repair Projects

County	Federal ID	Railroad	Highway Jurisdiction	Road Location	Federal Safety Funds (60 percent)
Clayton	376148W	ICE	Guttenberg	Geothe Street	\$ 39,382
Linn	307835P	CC	Hiawatha	Emmons Street Northeast	35,220
Sioux	381559M	DAIR	Hawarden	10th Street	32,836
O'Brien	385776B	DM&E	Sheldon	10th Avenue	34,927
O'Brien	385779W	DM&E	Sheldon	3rd Avenue	45,802
Scott	606805X	IAIS	Walcott	Main Street	90,000
The above projects were approved by the Transportation Commission on Nov. 10, 2009.					
Black Hawk	307173S	CC	Waterloo	Burton Avenue	84,720
Jasper	607979X	IAIS	Newton	North 19th Avenue East	71,263
Black Hawk	200781L	UP	Waterloo	Walnut Street	66,600
Dubuque	306971L	CC	Peosta	Main Street	80,224
Clay	385717Y	GPGC	Spencer	4th Avenue West	28,511
Clay	385712P	DME	Spencer	2nd Avenue East	96,747
Linn	376727F	CIC	Cedar Rapids	10th Street Southwest	174,132
Chickasaw	385302R	DME	Ionia	North Center Street	46,801
Black Hawk	307115W	CC	Waterloo	Colorado Street	71,580
TOTAL					\$ 998,745

DEPARTMENT OF TRANSPORTATION
COMMISSION ORDER

Division/Bureau/Office Planning, Programming and Modal Division
Office of Rail Transportation Order No. PPM-2011-20
Submitted by Tamara Nicholson Phone No. 515-239-1052 Meeting Date November 9, 2010
Title Federal-Aid Highway/Rail Crossing Safety Program Projects (2012)

DISCUSSION/BACKGROUND:

Staff will present the proposed 2012 Federal-Aid Highway/Rail Crossing Safety Program for warning device projects.

A listing of the proposed program of projects is attached.

PROPOSAL/ACTION RECOMMENDATION:

It is recommended the Commission approve the 2012 Federal-Aid Highway/Rail Crossing Safety Program projects.

COMMISSION ACTION:

Moved by _____ Seconded by _____

	Aye	Vote Nay	Pass
Blouin	_____	_____	_____
Cleaveland	_____	_____	_____
Durham	_____	_____	_____
Miles	_____	_____	_____
Reasner	_____	_____	_____
Sawtelle	_____	_____	_____
Wiley	_____	_____	_____

Division
Director

Legal

State Director

PPM-2011-20

Tamara Nicholson, Office of Rail Transportation, reviewed the 2012 Federal-Aid Highway/Rail Crossing Safety Program projects. This program provides assistance to railroads and highway jurisdictions to install or upgrade safety improvements at highway/railroad crossings. Funding is available to railroads and highway authorities through an annual application program. Applications can be submitted by either the railroad or highway authority to be considered for funding.

Ms. Nicholson said she presented the 2012 safety project recommendations at the October Commission workshop. Today's recommendation is to approve 20 projects and funding for statewide crossing closures totaling \$3.68 million for 2012.

Commissioner Durham moved, Commissioner Sawtelle seconded the Commission approve the 2012 Federal-Aid Highway/Rail Crossing Safety Program projects. Commissioner Cleaveland absent; remaining Commissioners voted aye.

Federal-Aid Highway/Rail Crossing Safety Program Projects (2012)

10/4/2010

Federal ID #	Applicant*	Railroad	Highway Jurisdiction	Road Location	Present Warning Device	Type of Improvement	B/C Ratio	Federal Funds
307839S	RR	CC	Cedar Rapids	42nd Street NE @ I-380	Cantilever Signals	Constant Warning Time	3.4	\$135,000
185978W	RR	UP	Hospers	Main Street	Signals	Signals w/Gate Arms	3.2	175,000
191286V	RR	UP	Salix	Walnut Street	Signals	Signals w/Gate Arms	3.1	170,000
307533M	HA	CC	Buena Vista County	County Road M27	Crossbucks	Signals w/Gate Arms	2.5	185,000
195403C	RR/HA	UP	Hanlontown	Main Street	Crossbucks	Signals w/Gate Arms	2.4	250,000
097456G	RR	BNSF	Sioux County	County Road B46	Signals	Signals w/Gate Arms	2.3	75,000
197085A	RR	UP	Story City	Roosevelt Street	Crossbucks	Signals w/Gate Arms	2.3	185,000
307528R	RR/HA	CC	Alta	W Hwy	Signals	Signals w/Gate Arms	2.1	180,000
191237Y	RR	UP	Monona County	290th Street	Crossbucks	Signals w/Gate Arms	1.9	190,000
186004S	RR	UP	Plymouth County	160th Street	Crossbucks	Signals w/Gate Arms	1.9	185,000
876196S	RR	UP	Cerro Gordo County	220th Street	Crossbucks	Signals w/Gate Arms	1.9	200,000
604552K	RR	UP	Wayne County	King Road	Crossbucks	Signals w/Gate Arms	1.9	200,000
197025R	RR	UP	Goldfield	Cedar Street	Crossbucks	Signals w/Gate Arms	1.9	180,000
876090W	RR	UP	Story County	140th Street	Crossbucks	Signals w/Gate Arms	1.9	185,000
876096M	RR	UP	Hardin County	330th Street	Crossbucks	Signals w/Gate Arms	1.8	185,000
876223L	RR	UP	Kensett	5th Street	Crossbucks	Signals w/Gate Arms	1.8	180,000
196729W	RR	UP	Luverne	Kossuth Street	Crossbucks	Signals w/Gate Arms	1.7	175,000
608012D	HA	IAIS	Tiffin	Jasper Avenue	Crossbucks/Stop Signs	Signals w/Gate Arms	1.6	190,000
064030U	HA	BNSF	Sioux City	7th Street	Crossbucks	Signals w/Gate Arms	1.6	220,000
924015T	RR	UP	Calamus	2nd Street	Crossbucks	Signals w/Gate Arms	1.6	175,000
						Crossing Closures Statewide		60,000
TOTAL								\$3,680,000

* HA = Highway Authority

**DEPARTMENT OF TRANSPORTATION
COMMISSION ORDER**

Planning, Programming and Modal Division

Division/Bureau/Office Office of Systems Planning Order No. PPM-2011-21
 Submitted by Craig Markley Phone No. 515-239-1027 Meeting Date November 9, 2010
 Title Revitalize Iowa's Sound Economy (RISE) Application – Hiawatha (Delegation)

DISCUSSION/BACKGROUND:

The city of Hiawatha submitted a RISE Local Development application in the September 2010 round requesting a grant to assist in the reconstruction of approximately 3,976 feet of North Center Point Road from Tower Terrace Road south to Stamy Road. This project is necessary to provide adequate access to four lots totaling more than 82 acres for industrial, manufacturing, warehouse/distribution, printing, software manufacturing and product packaging services.

The evaluation and rating for the project will be discussed.

PROPOSAL/ACTION RECOMMENDATION:

It is recommended the Commission, based on the capital investment commitment and potential for future job creation, award a RISE grant of \$1,372,931 or up to 50 percent of the total RISE-eligible project cost, whichever is less, from the city share of the RISE fund.

COMMISSION ACTION:

Moved by _____ Seconded by _____

	Aye	Vote Nay	Pass
Blouin	_____	_____	_____
Cleveland	_____	_____	_____
Durham	_____	_____	_____
Miles	_____	_____	_____
Reasner	_____	_____	_____
Sawtelle	_____	_____	_____
Wiley	_____	_____	_____

 Division Director Legal State Director

Craig Markley, Office of Systems Planning, said the city of Hiawatha submitted a RISE local development application to construct approximately 3,976 feet of North Center Point Road from Tower Terrace Road south to Stamy Road. This improvement will provide improved access to four lots totaling more than 82 acres for industrial, manufacturing, warehouse/distribution, printing, software manufacturing, and product packaging developments. The project received a rating of 57 points. The total estimated project cost is \$2,745,861. The city is requesting a RISE grant of \$1,372,931 and will provide a 50 percent local match. He introduced Allen Merta, Priority One, Cedar Rapids Area Chamber of Commerce.

Mr. Merta said North Center Point Road has been one of the greatest impediments to any kind of development in Hiawatha for a long time. As stated in their application, they have records going back to about 1920 when that roadway was first on an Iowa state road map and they believe the paving was done in about 1930. It was designed for Model T's because the curbs were ground off at one point. Mr. Merta said the utilities are in place and the city has identified 108 acres including a 26-acre site that is being rezoned. If one uses the generalize rule of thumb on development, that property, if covered with 30 percent building, would be almost 1.5 million square feet under roof. If the average construction cost was \$72 per square foot, that would be almost \$106 million in construction. If there were two employees per 1,000 square feet, they would be looking at 2,900 new jobs over the development period. If using the average hourly wage of \$20.90 as provided by the Iowa Department of Economic Development, that would generate an annual payroll of \$128 million. Hiawatha has 6,500 people so that would have a huge impact on the community.

Commissioner Reasner asked if this is the industrial park where CCD Packaging is located. Mr. Merta said that is correct. Commissioner Reasner said the roadway currently stops and there is no other way out of the park. This RISE project will create an exit road. Mr. Merta said that is correct. CCD Packaging is classified as a food processor and in the last three years they have installed robotics to help in the packaging. When the roadway is finished, he invited the Commission to Hiawatha to drive on the pavement and tour CCD Packaging, which he noted is doubling in size.

Mr. Markley reviewed staff's recommendation.

Commissioner Blouin moved, Commissioner Durham seconded the Commission, based on the capital investment commitment and potential for future job creation, award a RISE grant of \$1,372,931 or up to 50 percent of the total RISE-eligible project cost, whichever is less, from the city share of the RISE fund. Commissioner Cleveland absent; Commissioner Reasner abstained; remaining Commissioners voted aye. Motion passed.

RISE LOCAL DEVELOPMENT FUNDING
September 2010
SUMMARY

Applicant: City of Hiawatha

Multiyear?: No
Multijurisdiction?: No

ROAD PROJECT LOCATION AND DESCRIPTION: Construct approximately 3,976 feet of North Center Point Road south of Tower Terrace Road south to Stamy Road.

ASSOCIATED ECONOMIC DEVELOPMENT: The roadway improvement will provide improved access to four lots totaling more than 82 acres for industrial, manufacturing, warehouse/distribution, printing, software manufacturing and product packaging services.

PROJECT FINANCING:

Roadway Project Cost:	\$2,745,861	Local Match (Total):	\$1,372,930
RISE (Total):	\$1,372,931	Up-Front:	\$1,372,930
Grant:	\$1,372,931	NPV of Loan Repayment:	0
Loan:	0	Effective Match Percent:	50
Loan Terms:	Yrs. 0	Up-front Participation Sources:	
	Int.: 0 %	Private:	
		Public:	\$1,372,930
		Local Match (Total):	\$1,372,930

PROJECT EVALUATION:

Development Potential (35):	20
Economic Impact and Cost Effect. (20):	14
Local Commit. and Initiative (35):	16
Transportation Need (4):	3
Local Economic Need (6):	4

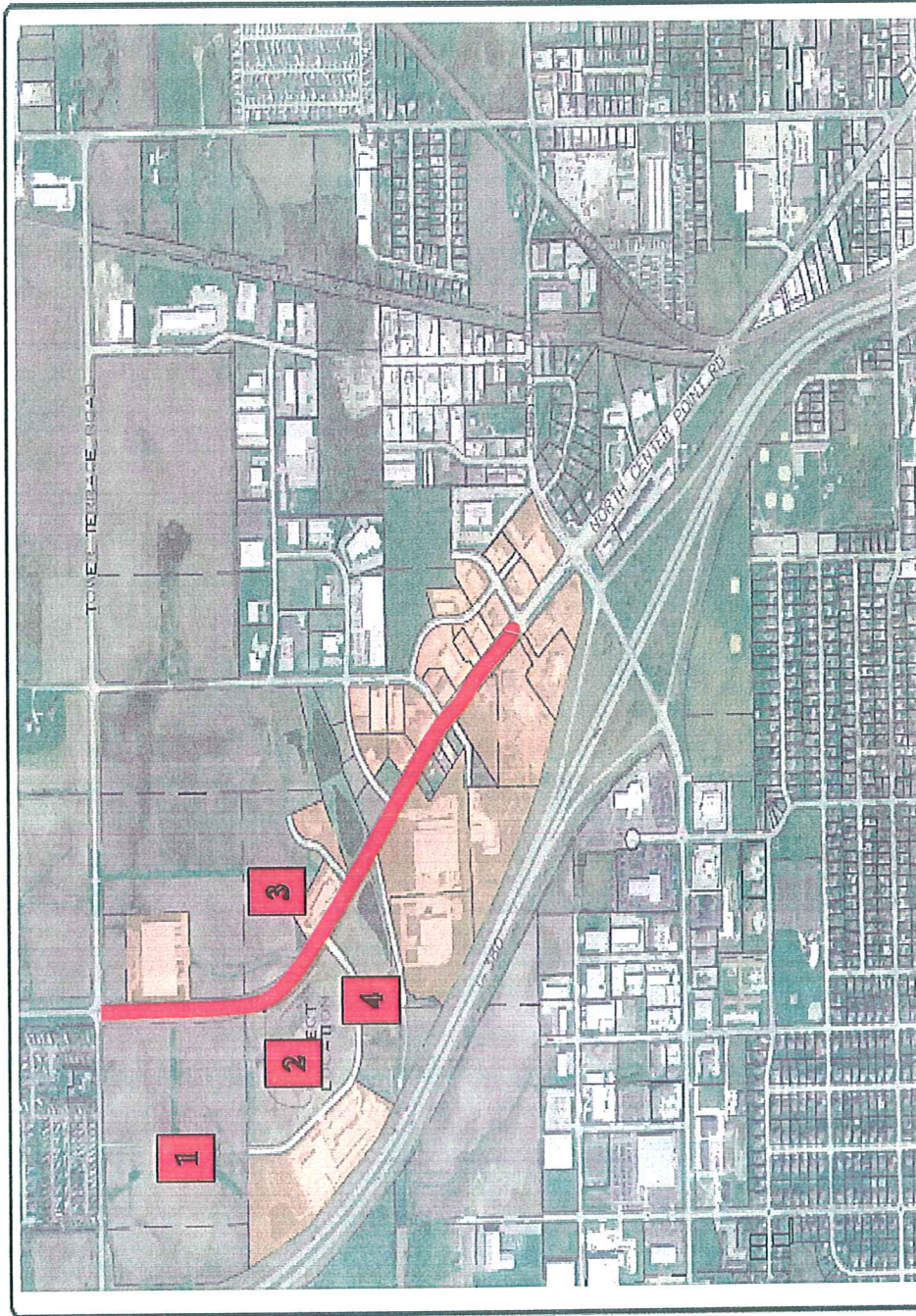
Total Rating: 57

Jobs: 200

STAFF RECOMMENDATION:

Award a grant of \$1,372,931 or up to 50 percent of the RISE eligible project cost, whichever is less. Funding will come from the city share of the RISE fund.

City of Hiawatha



DEVELOPED
NON-RESIDENTIAL LOTS
SERVED BY PROJECT

HALL & HALL ENGINEERS, INC.
REGISTERED PROFESSIONAL ENGINEERS
SURVEYING - LAND DEVELOPMENT
DESIGNED BY: JEDD DRAKE, P.E. | CHECKED BY: RWD
www.halleh.com

RUSE GRANT EXHIBIT
NORTH CENTER POINT ROAD
DEVELOPED LOTS
HIAWATHA IA

Scale:	1" = 600'
Sheet:	1 of 1
Project Number:	4089-10-14
Date:	9/21/10
File:	4089-10-14.dwg
Printed by:	PK

ESD File: L:\projects\4089-10-14.dwg User: jhse Date Plotted: Sep 21, 2010 - 2:44:40 PM Plotter: HP DesignJet 2400

PPM-2011-22

Craig Markley, Office of Systems Planning, said the city of Ankeny submitted a RISE local development application to construct approximately 1,640 feet of Corporate Woods Drive south extension and 1,610 feet of Four Mile Drive west extension in phase one of the Crosswinds Business Park. The improvements will provide access to ten lots totaling over 120 acres for light industrial, manufacturing, warehousing and office services development. The project received a rating of 46 points. The total estimated project cost is \$2,799,068. The city is requesting a RISE grant of \$1,399,534 and will provide a 50 percent local match. He introduced Steve VanOort, Mayor of Ankeny.

Mayor VanOort introduced the delegation and expressed appreciation for the long-term partnership the Commission has provided the city of Ankeny to make Iowa a better place. More specifically, he expressed appreciation for the Department's help on the Northeast 36th Street interchange that is getting underway and for the overlay projects on U.S. 69 and Iowa 415 in Ankeny. Thanks also to the DOT staff for the help on the application for this project.

Mayor VanOort said the project area is just south of the Ankeny office of the Iowa DOT, located east of I-35 and north of I-80. He said one goal in the city of Ankeny's strategic plan is to make Ankeny the next economic development employment center. A key factor that makes this particular site valuable is the partnering they did with the Iowa Department of Transportation and others to build the Corporate Woods interchange and Corporate Woods Drive. They have worked to extend the water and sanitary sewer services to the Crosswinds Business Park and have cooperated with gas, electric, and telecommunications utilities to ensure their services are next to the Crosswinds Business Park. The city partnered with eight property owners in 2006 and 2007 to master plan 400 acres of Crosswinds Business Park. The master plan incorporates many of the techniques that promote low-impact development for storm water management. They worked with those same property owners in 2008 to establish a development plan for the business park that maintains high standards as the park develops. He said the city of Ankeny wants to continue to invest in this site with plans to construct the water and sanitary service infrastructure within the Crosswinds Business Park at a cost of \$1.2 million and incur the upfront costs of the roadway project that are not included in the RISE-eligible funding.

About two years ago, Mayor VanOort said he made a presentation to the Commission regarding another RISE grant. The Department worked with the city on that grant and they just completed the widening of Southeast Oralabor Road. Pioneer has built a new regulatory science facility in Ankeny that employs 80 people and AccuMold recently announced they will be doubling their building with a 40,000 square foot expansion and adding 43 management production jobs. These are high paying jobs with most paying 130 percent of the average Polk county wage.

Mayor VanOort said Ankeny's businesses are in the growing sectors of advance manufacturing, bio-sciences and logistics. The development opportunities of Crosswinds Business Park will be shared with existing businesses that want to grow in Ankeny, and the city of Ankeny will partner with the property owners to market the site to prospective businesses through marketing trips, trade shows, relationships with commercial brokers in their community and on the city's website. The city of Ankeny appreciates the support of the Iowa Departments of Transportation and Economic Development. They are confident the Department's investment in their vibrant, growing community will pay off with new jobs for Iowa and new business investments.

Mr. Markley reviewed staff's recommendation.

Commissioner Reasner moved, Commissioner Sawtelle seconded the Commission, based on the capital investment commitment and potential for future job creation, award a RISE grant of \$1,399,534 or up to 50 percent of the total RISE-eligible project cost, whichever is less, from the city share of the RISE fund. Commissioner Cleveland absent; remaining Commissioners voted aye.

RISE LOCAL DEVELOPMENT FUNDING
September 2010
SUMMARY

Applicant: City of Ankeny

Multiyear?: No
Multijurisdiction?: No

ROAD PROJECT LOCATION AND DESCRIPTION: Construct approximately 1,640 feet of the Corporate Woods Drive Extension located south of S.E. Corporate Woods Drive and 1,610 feet of the Four Mile Drive West Extension located west of Four Mile Drive in phase 1 the Crosswinds Business Park.

ASSOCIATED ECONOMIC DEVELOPMENT: The roadway improvements will provide access to 10 lots totaling over 120 acres for light industrial, manufacturing, warehousing and office services.

PROJECT FINANCING:

Roadway Project Cost:	\$2,799,068	Local Match (Total):	\$1,399,534
RISE (Total):	\$1,399,534	Up-Front:	\$1,399,534
Grant:	\$1,399,534	NPV of Loan Repayment:	0
Loan:	0	Effective Match Percent:	50
Loan Terms:	Yrs. 0		
	Int.: 0 %	Up-front Participation Sources:	
		Private:	
		Public:	\$1,399,534
		Local Match (Total):	\$1,399,534

PROJECT EVALUATION:

Development Potential (35):	15
Economic Impact and Cost Effect. (20):	9
Local Commit. and Initiative (35):	15
Transportation Need (4):	3
Local Economic Need (6):	4

Total Rating: 46

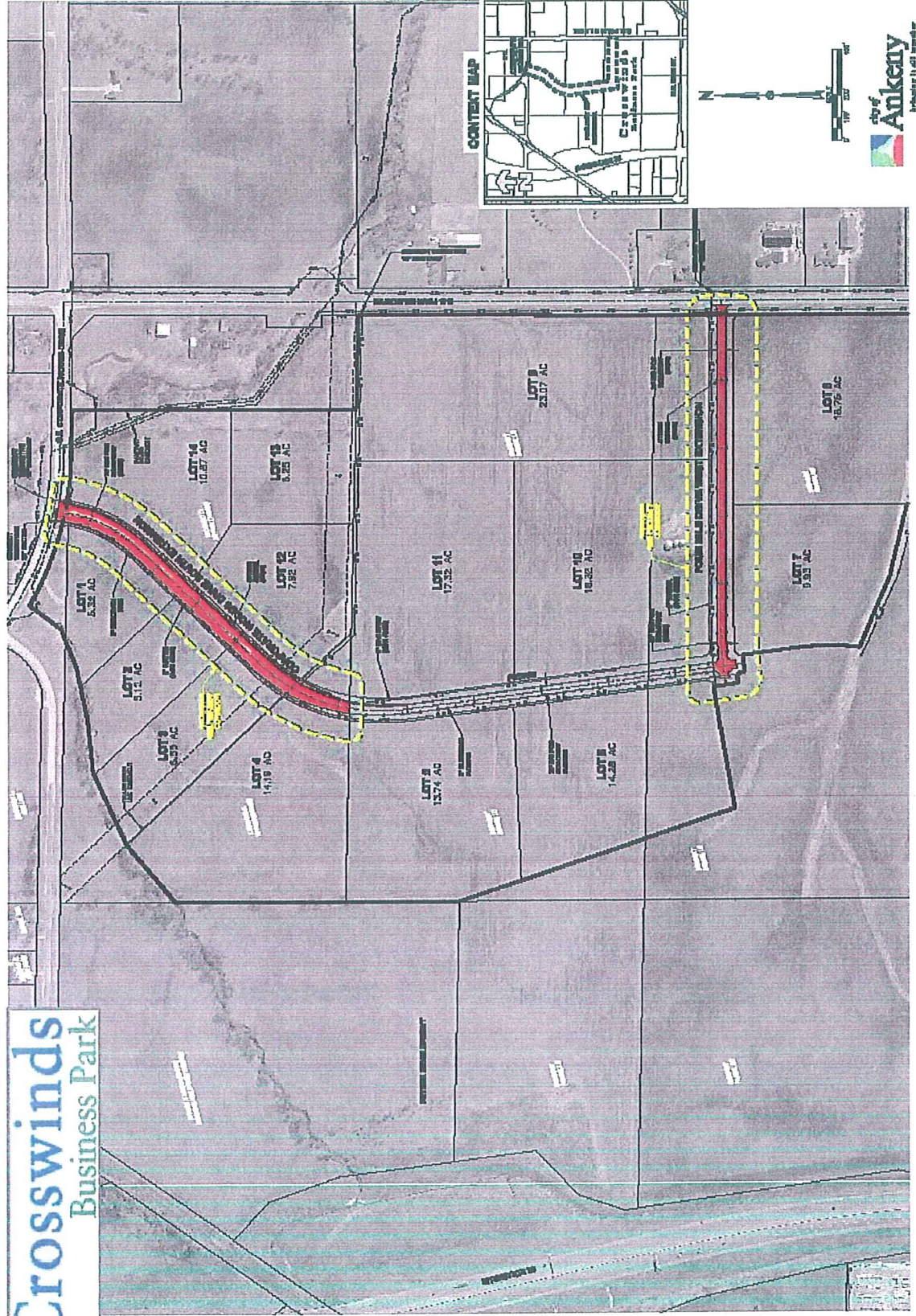
Jobs: 100

STAFF RECOMMENDATION:

Award a grant of \$1,399,534 or up to 50 percent of the RISE eligible project cost, whichever is less. Funding will come from the city share of the RISE fund.

City of Ankeny

Crosswinds Business Park



CROSSWINDS BUSINESS PARK
 PHASE 1 - PRELIMINARY LOT LAYOUT



3408 8th Avenue, Suite 10
 Ankeny, Iowa 50021
 Phone: (515) 281-4400 Fax: (515) 281-4410

NO.	REVISION

1/1
 10/26/11

**DEPARTMENT OF TRANSPORTATION
COMMISSION ORDER**

Division/Bureau/Office Planning, Programming and Modal Division
Office of Systems Planning Order No. PPM-2011-23
 Submitted by Craig Markley Phone No. 515-239-1027 Meeting Date November 9, 2010
 Title Revitalize Iowa's Sound Economy (RISE) Default and Proposed Settlement – Webster County

DISCUSSION/BACKGROUND:

On July 11, 2006, Webster County was awarded a RISE grant of \$600,000 to grade and pave approximately 2,630 feet of new roadway south of Iowa 7 and construct turning lanes on Iowa 7.

Commission approval of this project was contingent on the creation of 100 jobs within two years after completion of the roadway. Associated capital investment was to be approximately \$272 million.

On July 10, 2008, the roadway was opened to traffic. As of August 30, 2010, Webster County had not met the job creation contingency. The county elected not to utilize a one-year extension due to minable change in forecasted employment. The department was advised that seven new jobs were created.

On September 1, 2010, Webster County was notified the project was in default. The method of calculation and amount of proposed settlement was also provided to the county. Webster County has agreed to repay the proposed \$199,656 default settlement.

PROPOSAL/ACTION RECOMMENDATION:

It is recommended the Commission approve the default and proposed settlement of \$199,656 for Webster County.

COMMISSION ACTION:

Moved by _____ Seconded by _____

	Aye	Vote Nay	Pass
Blouin	_____	_____	_____
Cleveland	_____	_____	_____
Durham	_____	_____	_____
Miles	_____	_____	_____
Reasner	_____	_____	_____
Sawtelle	_____	_____	_____
Wiley	_____	_____	_____

Division
Director

Legal

State Director

PPM-2011-23

Craig Markley, Office of Systems Planning, said with RISE immediate opportunity projects there are job creation commitments associated with receiving the funds. The Department monitors these contingencies to assure they are met within a specified time frame. Extensions on that time frame are granted in some instances but, ultimately, if the contingencies are not met, the Department will seek partial or full revocation of the grant.

Mr. Markley said today he is presenting a proposed settlement with Webster county for a RISE project awarded in July, 2006. The county received a grant of \$600,000 for road construction contingent on the creation of 100 new jobs by the Tate and Lyle Company over two years. After the two-year monitoring period, the number of new jobs created totaled seven which is 93 short of the contingency. Based on the default settlement policy, the county has agreed to a default settlement of \$199,656. Staff recommends the Commission approve the proposed default settlement for the Webster county RISE project.

Commissioner Sawtelle moved, Commissioner Miles seconded the Commission approve the default and proposed settlement of \$199,656 for Webster County. Commissioner Cleaveland absent; remaining Commissioners voted aye.

Meeting adjourned at 1:54 p.m.

RISE Default Settlement Proposal for:

RECIPIENT : **Webster County**
 PROJECT # : **RC-C094(65)--9A-94**
 AGREEMENT # : **2007-R-001**

Reimbursable Maximum : \$600,000

To bring this project agreement to a close, in accordance with the procedure adopted by the Iowa Department of Transportation Commission (Commission), the Recipient (as identified above) is required to repay a portion of the RISE grant funds received.

The amount to be repaid is calculated in the following manner, according to the method approved by the Commission, all amounts are rounded to the nearest whole dollar or percentage point.

Step 1 Determine the difference between the RISE grant funds actually reimbursed and 50% of the total eligible costs. The resulting amount is referred to as the "RISE differential"

	Actual	
a. RISE grant funds reimbursed:	600,000.00	
b. FINAL eligible project costs:	770,632.49	
c. 50% of FINAL eligible costs:	385,316.25	
d. "RISE differential" (a) - (c) =	214,683.76	\$214,684

Rounded

Step 2 Determine the amount of the contingency unfulfilled.

7 FTE new jobs were created by Tate and Lyle.
 The funding contingency required that 100 FTE new jobs be created.

a.	Contingency total # of jobs created/retained :	100
b.	- Actual total # of jobs created / retained :	7
c.	Contingency unfulfilled amount:	93
	Determine percentage = (c/a)	93.00%

Therefore the percentage of contingency still unfulfilled is: 93% Rounded

Step 3 Determine the prorated amount by multiplying the RISE differential amount by the percentage of the contingency still unfulfilled.

Prorated amount = (Step 1.d)	X	(Step 2 %)	= Prorated Amount
\$214,684	X	93%	\$199,656
			Rounded

Webster County

